

CrystalVox Loqui Mini gives you articulate and intelligible speech using the latest advancements in acoustic design.

## TECHNICAL SPECIFICATION:

Type	3-way 2 drivers loudspeaker with built-in amplifier
Frequency response (+/-5dB)	88Hz-17KHz
Transducers	1x 3" flat aluminium sandwich woofer, 1x 8 x 2" planar magnetic driver
Input sensitivity	1.22V (RMS)
SPL max at 1m	98dB
Horizontal dispersion @-6dB (200Hz-1.1KHz)*	110
Horizontal dispersion @-6dB (200Hz-1.1KHz)*	82
Vertical dispersion* @-6dB	90
Internal amplifier	2X50w Class D
Audio input terminal	Balanced 3-way Phoenix (supplied)
DC Input	24V/2A min. 2-way Phoenix (supplied)

## DIMENSIONS:

Length	416mm
Width	120mm
Height	80MM
Weight	2.7kg

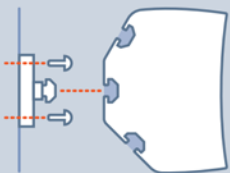
## OTHER:

Grille	Powder coated steel
Finish	Black / White / Custom
Mounting	3xT-Slots(8mm). Flat, 30 and 45 degrees
Options	CV-WB (Wall Bracket): includes screws and locking nut CV-WBS (Silent Mount Wall Bracket): includes screws and locking nut

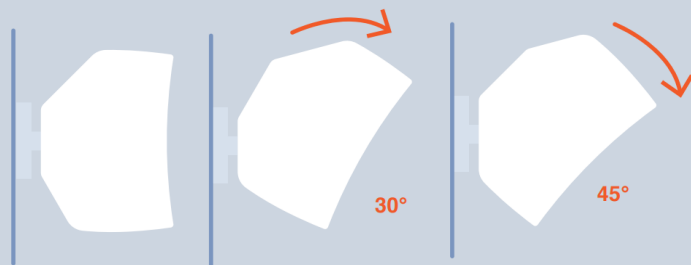
## Key Features:

- Optimised for conference rooms hosting up to 8 people
- High performance 8" proprietary planar magnetic driver combining sound dispersion control and low harmonic distortion
- 3" aluminium sandwich ultra rigid flat diaphragm woofer
- DSP 3-way crossover and FIR optimised frequency response
- Wide high frequency dispersion design to generate an even sound field
- Sealed and highly damped woofer enclosure. Sharp transient response design for clear and intelligible vocals
- Rigid and mechanically damped 3mm aluminium extruded enclosure to reduce cabinet sound colorations
- 3x 8mm T-slots allow for easy multiangle mounting
- Silent Mount Wall Bracket (CV-WBS) reduces sound transmissions to the mounting wall (to be ordered separately)

## Surface-mount Options

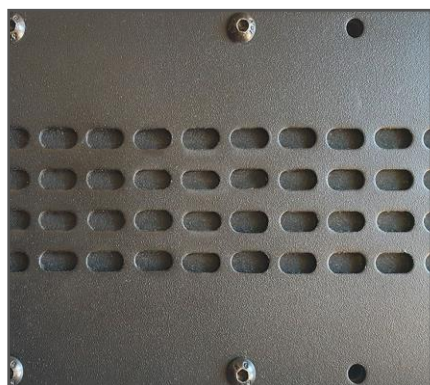


Thanks to its 3 mounting rails, the CrystVox speaker can be securely installed at different up or down tilting angles which is ideal for mounting above or below video screens.



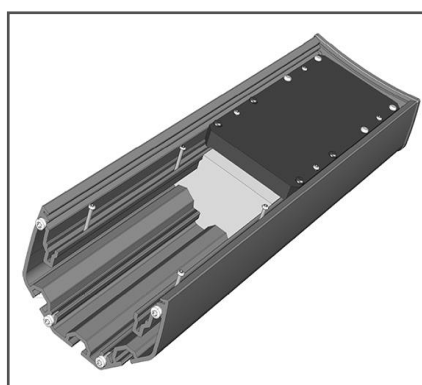
## Desing Features

### High performance planar magnetic driver



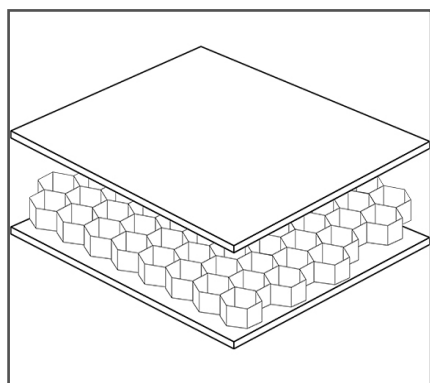
High performance planar magnetic driver The internal components are engineered, manufactured and assembled with great care to achieve the most realistic listening experience.

### 3mm extruded aluminium enclosure



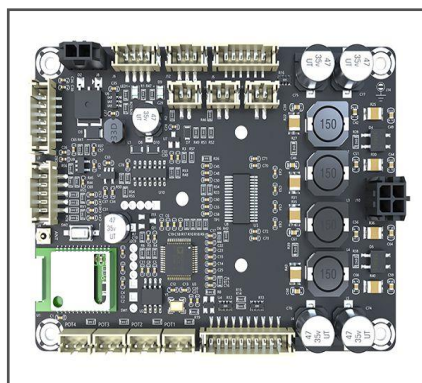
Even the speaker cabinets are mechanically and geometrically optimised to eliminate interfering vibration and resonances.

### Honeycomb sandwich woofer / tweeter diaphragm



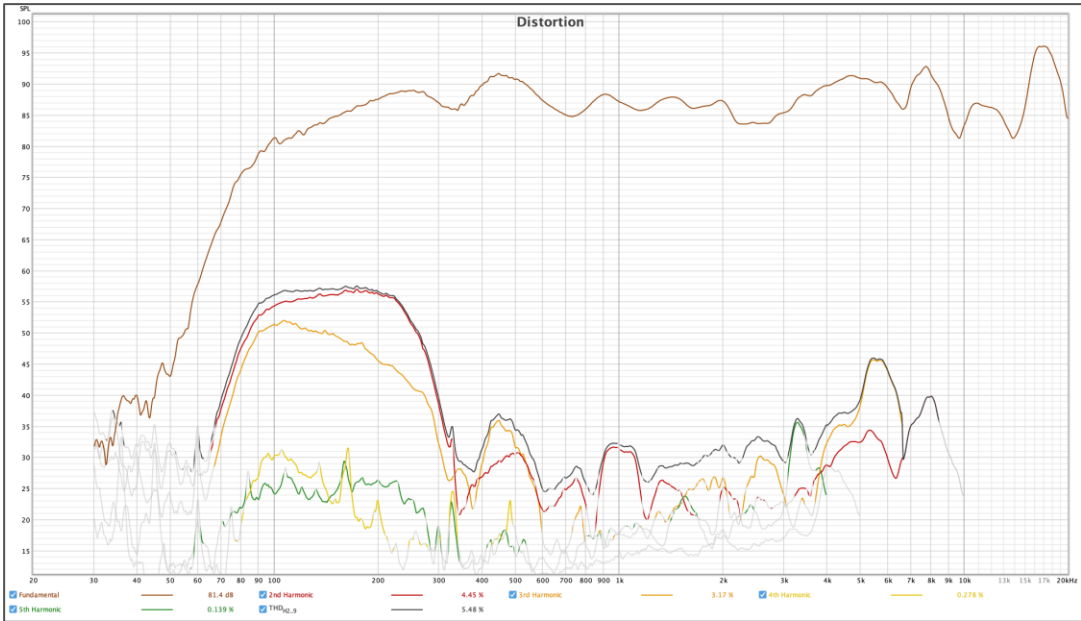
CrystalVox speakers use highly innovative and proprietary honeycomb sandwich diaphragm woofers. While requiring a great level of attention in the setup process, these high performances devices will deliver outstanding level of acoustic presence and realism.

### Multi-channel Class-D DSP amplifier

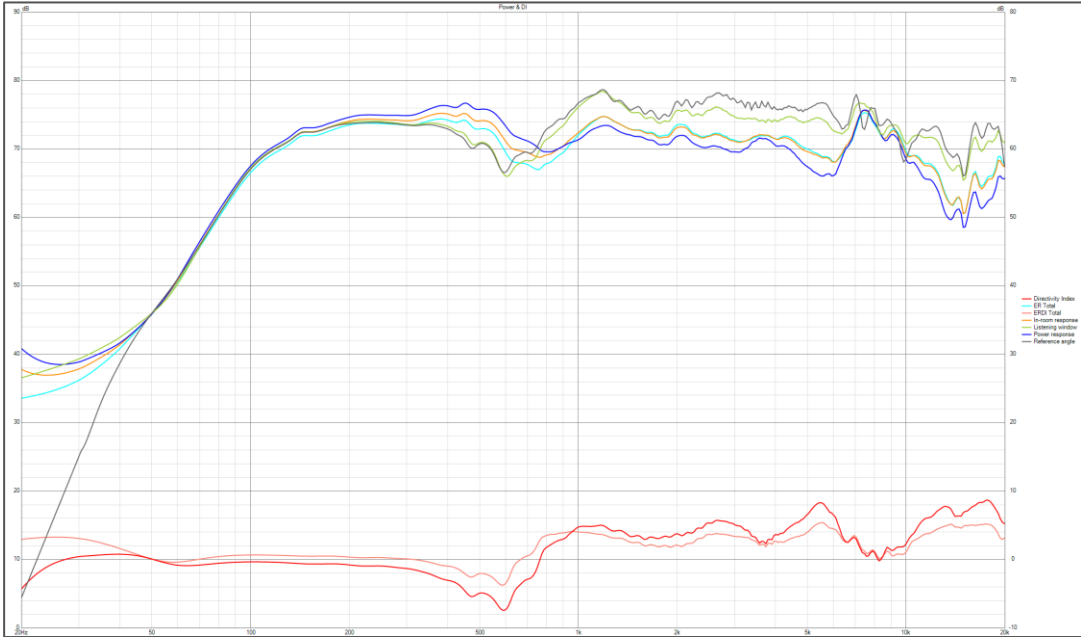


**To modify:**  
High accuracy FIR Filters  
Efficient Class-D design  
Full active crossover configuration

Distortion Listening Level



Spinorama



Waterfall

