



The CrystalVox PAN67 planar loudspeaker will playback audio information in a controlled pattern.

It uses a series of transducers that offer outstanding response in the high frequencies and low distortion in the midrange. This will generate a sound clarity that will catch anybody's attention, even in the noisiest situations.

TECHNICAL SPECIFICATION	
Type	Planar source loudspeaker
Line input	2-way Euro block
SPEAKER OUTPUT:	
Frequency response	380Hz-14KHz +/-5dB
Max SPL	94dB 1Khz @ 4m
Average dispersion 300-500Hz	60 degrees
Average dispersion 700-10KHz	20 degrees
DIMENSIONS:	
Length	670mm
Width	670mm
Hight	85mm
Weight	4kg
OTHER:	
Ceiling mount bracket	VESA standard adaptor plate with magnetic fixing
Hanging mount (optional)	4 x 2m suspension Gripple cable kit
Finish	Available in black or white; Custom colours available

### Key Features:

- Controlled directivity loudspeaker Planar wave radiation offers low attenuation over distance
- The sound pressure attenuation over distance is low compared to a conventional point source loudspeaker
- The level drop is approximately 3dB at 10m
- External dedicated amplifier SONO-PT
- Low profile magnetic surface/ceiling mount system
- M5 suspension inserts for easy rigging
- Applications: Museums, Point of sale, Art installations, Localised sound effects, Video conferencing, Intercom systems in noisy environments

### Mounting Options



4 x 2m suspension Gripple cable kit



VESA standard adaptor plate with magnetic fixing

## Standard finishes

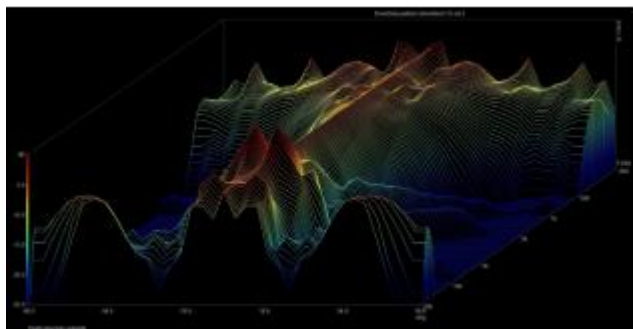


(White)

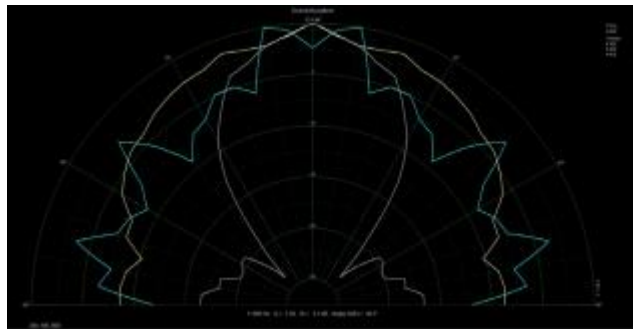


(Black)

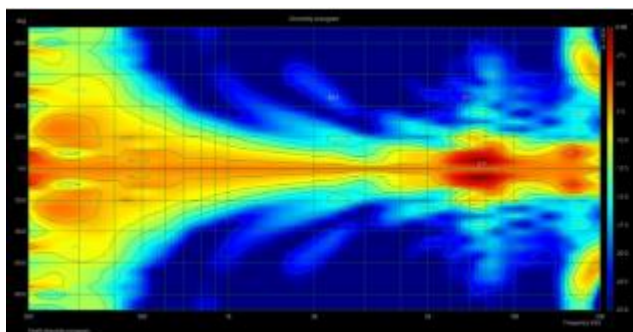
## Measurements



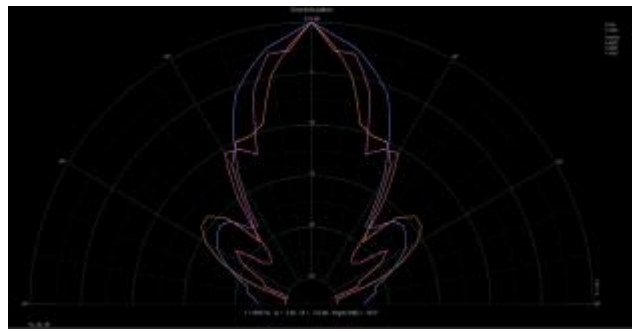
Waterfall plots energy and time



Polar plots 200Hz, 800Hz



Isobar plots



Polar plots 1KHz, 2KHz, 4KHz