

StepArray column loudspeaker SA250P

StepArray

SA250P - Datasheet Digitally steerable column loudspeaker



StepArray column loudspeakers ensure perfect speech intelligibility and optimal acoustic comfort, even in noisy and reverberant venues. They are based on the DGRC principle (Digital and Geometric Radiation Control).

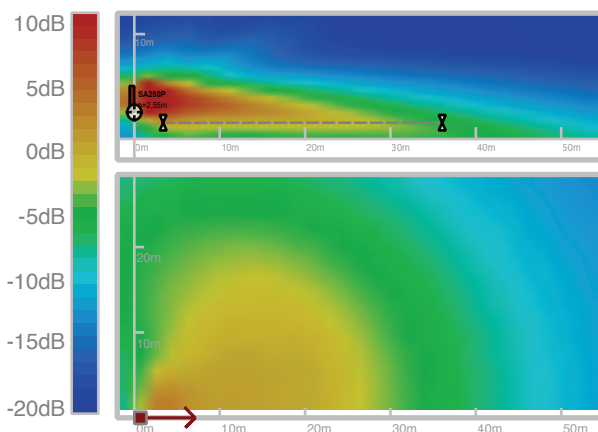
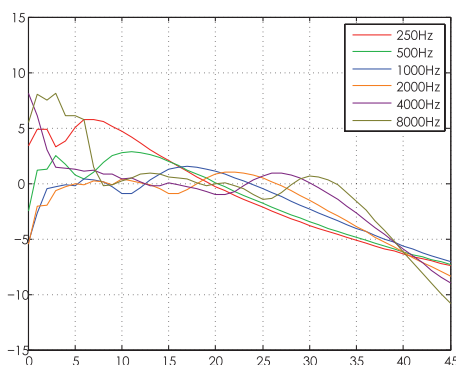
StepArray model SA250P is a 2.5m high column designed for an horizontal listening area. Its 45m range makes it suitable for very large and flat volumes such as railway stations, airports, etc.

DSP processing of StepArray columns is performed in the NUT processor.

The NUT control software can be downloaded for free.

- Security
- Optimal intelligibility
- Even sound coverage
- Easy maintenance

Sound coverage



Above: Abscissa: distance (m) ; Column SA250P at 2,55m from ground
0dB is the mean SPL over 10m-30m on axis

Acoustical data

Angle of listening area	0-5°
Range +/- 3dB	35m
Range +/- 5dB	45m
Max SPL (CEI268-16 noise)	95dB SPL at 20m
Freq. bandwidth (-10dB)	110Hz-19kHz
Horiz. opening angle	180°
Loudspeaker	3", neodymium, moulded frame

Electrical data

Connector	12 pins
Cabling length	≤300m with 7G1,5 cable ≤500m with 7G2,5 cable
Impedance	6 channels, 8 Ohms

Mechanical data

Materials	Steel and PVC
Dimensions (mm)	2505(H) x 124(W) x 159(D)
Weight (kg)	24
Environment	From -25°C to 55°C. IP55
Color	Black (RAL9005) ; White (RAL9016) other RALs in option

Mounting

Flush mounting	Supplied square brackets
----------------	--------------------------

Tuning and exploitation

Software	Supplied NUT software
Modeling	EASE et CATT-Acoustic models available