

TS Series

Thin Speakers by PhaseTech®

Features

- Ultra-thin profile for a sleek appearance
- Audiophile-grade sonic performance
- Flexible mounting options
- Achieve three channels with only two speakers (TCE1.5)
- Side-firing drivers for ultra-wide soundstage (TSB3.0)

Applications

- Corporate conference rooms
- Digital signage
- Education
- Waiting rooms
- Offices and lobbies

High-Quality Audio for Video Displays

With TS Series thin speakers, you can enjoy high intelligibility in dialogue and communication along with full-fidelity music and sound to accompany video presentations – all in cabinets presenting an ultra-slim profile. All three units measure only 1.5" deep at the edges (2.5" in the center). Soundbar, center channel eliminator and surround models are available.

The TSB3.0 soundbar incorporates Enhanced Voice Technology™ (EVT) circuitry and Spatial Field Expanders™ (SFE) to increase voice intelligibility and create an ultra-wide soundstage. EVT circuitry may be turned on and off as needed. The TCE1.5 achieves three channels (left, center and right) via two units, using specially placed center channel speakers that are wired together at the amp. This space-saving design is ideal for waiting rooms, lobbies and other locations where speakers need to be mounted to the side rather than underneath the TV. TFS1.0 speakers complement the TSB3.0 and TCE1.5 as surrounds, or may be used throughout the system for front, center and surround audio. The TCE1.5 includes a wall mount and a smoked acrylic vertical base.

SB335

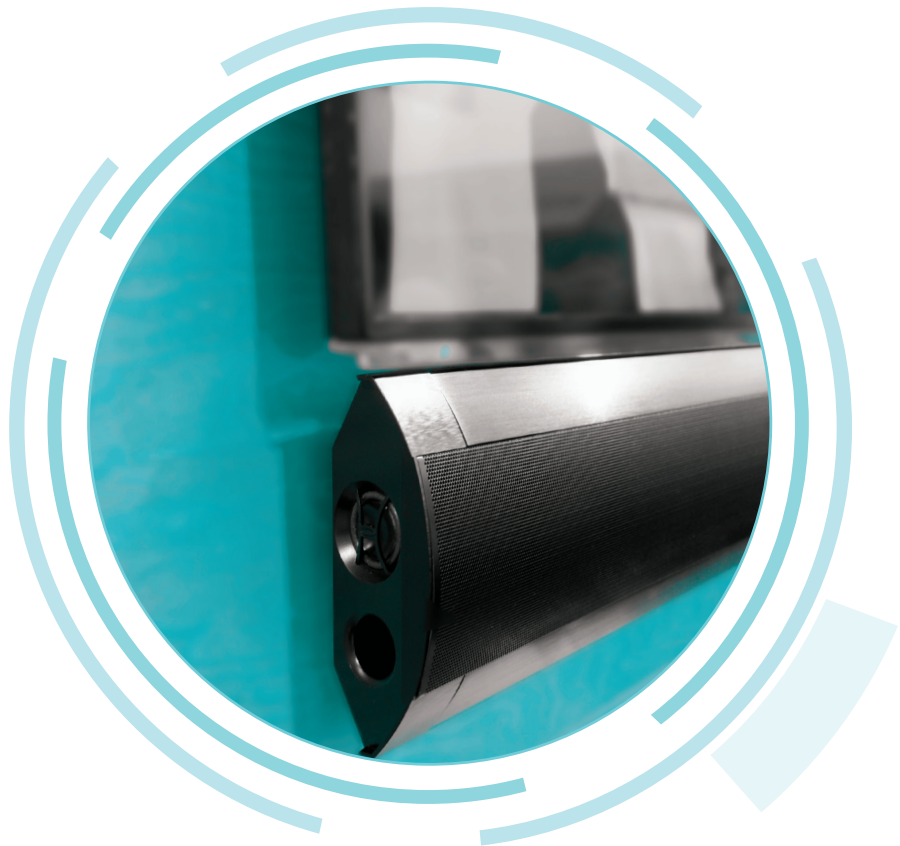
The newest addition to our Small Amp series, this Class D amp is packed with features that make it ideal for powering speakers in digital signage applications. Use it for a passive soundbar or to feed up to three speakers in a display.



SOUNDTUBE®

E N T E R T A I N M E N T

BY MSE AUDIO



SB335	
Power Per Channel @ < 10% THD	35 W 8 Ω (3 channels) 50 W 8 Ω (2 channels)
Power per channel @ < 1% THD	40 W 8 Ω (3 channels) 55 W 8 Ω (2 channels)
Signal to Noise Ratio	84 dB Unweighted
Max. Gain	34 dB (8 Ω)
Height	1.25" / 32.0 mm
Width	3.90" / 100.0 mm
Weight (amp only)	0.93 lbs. / 0.422 kg
Certifications	UL 60065, CE, ROHS



	TSB3.0	TFS1.0	TCE1.5
System Type	2-Way Ultra-Thin Soundbar with EVT™ Intelligibility Control	2-Way Ultra-Thin Front and Surround	2-Way Ultra-Thin Center Channel Eliminator
Tweeter	(3) .75" Silk/Synthetic Soft Dome	0.75" Silk/Synthetic Soft Dome	(2) .75" Silk/Synthetic Soft Dome
Woofer	(3) 3.0 in / 76.2 mm ultra-long throw polypropylene w/ NBR Surrounds	(2) 3" Ultra-Long Throw Polypropylene with NBR Surround	(3) 3" Ultra-Long Throw Polypropylene with NBR Surround
Additional Drivers	(2) 1" Patented Woven Synthetic Soft Dome Spatial Field Expanders™	(2) 3" Ultra-Long Throw Polypropylene with NBR Surround	(2) 3" Ultra-Long Throw Polypropylene with NBR Surround
Frequency Response (-3 dB)	75 Hz - 20 kHz	65 Hz - 20 kHz	65 Hz - 20 kHz
Impedance	8 Ω	8 Ω	8 Ω
Program Power	100 W	100 W	100 W
Sensitivity	90.0 dB	90.0 dB	90.0 dB
Height	6.75" / 171.4 mm	6.75" / 171.4 mm	6.75" / 171.4 mm
Width	43.00" / 1092.2 mm	18.50" / 469.9 mm	26.50" / 673.1 mm
Depth	1.50" / 38.1 mm	1.50" / 38.1 mm	1.50" / 38.1 mm
Certifications	N/A	N/A	N/A