

SB110

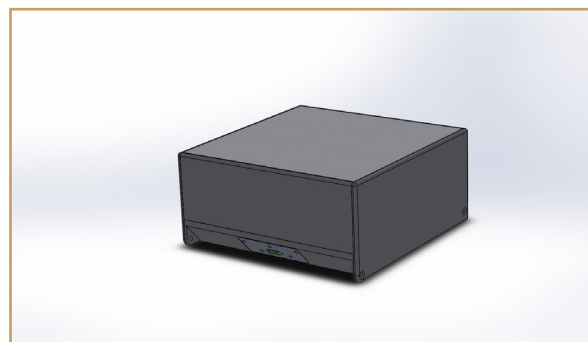
SB110

The SB110 passive subwoofer has been designed to provide a deep bass extension to column loudspeakers such as StepArray or RayOn, for diffusion of music or AV soundtracks.

SB110 is very compact, and can be positioned horizontally or vertically, thus ensuring optimum integration.

The 10" high-end neodyme loudspeaker is loaded with an enclosure operating in interactive dual volume mode. It achieves a remarkably low cutoff in a small volume, while yielding sharp and dynamic sound.

The NUT processor comprises modules for managing subwoofers, with presets corresponding to the SB110.



Features :

- Excellent visual integration, small volume, horizontal and vertical installation.
- Deep bass, sharp and dynamic sound.
- Processing with NUT processor.



Main technical data :

- Max SPL : 119dB continuous at 1m
- Power handling : 300W continuous, 1200W peak
- Low cut : 37Hz at -10dB
- Omnidirectional radiation

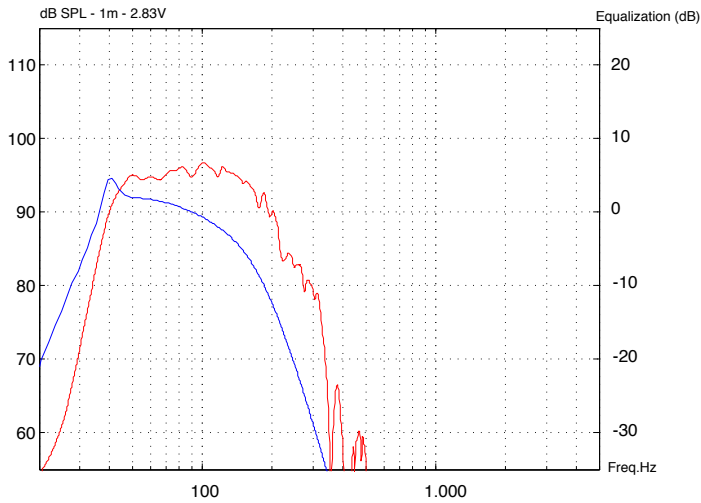
Accessories :

- SB110-KMV : wall mount for SB110

SB110

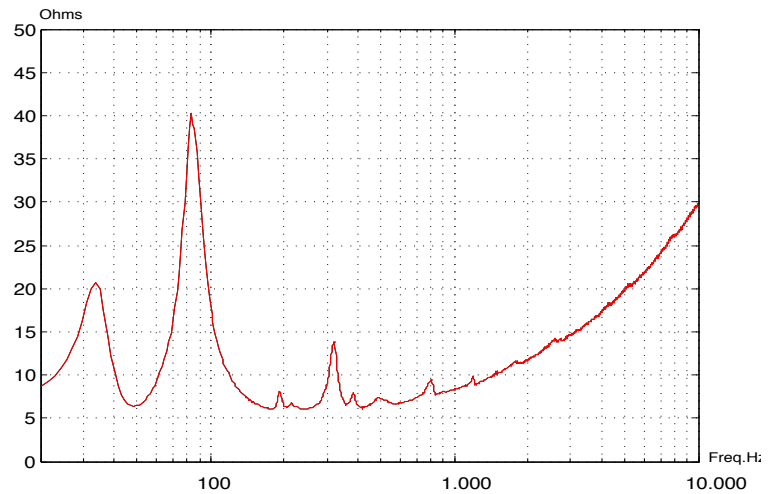
Technical Specifications

Frequency response



frequency response at 1m on axis in 1/2 space (left scale).
Blue : recommended EQ (right scale).

Impedance



Technical data

Acoustical

Loudspeaker type	10" neodyme
Enclosure type	Interactive dual volume
Power AES ¹ / Peak	300W / 1200W
Sensitivity ²	95.5dB SPL/1W/1m
Low cutoff frequency	37Hz at -10dB ; 43Hz at -3dB
Directivity type	Omnidirectionnal
Max continuous SPL ²	119dB at 1m
Nominal impedance	8 ohms
Recommended ampli power	500W

Filtering

Crossover high cutoff	200Hz max
Protection NUT	On diaphragm excursion
Recommended EQ	3 biquad cells

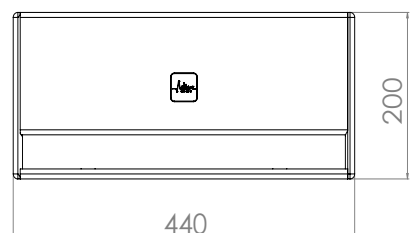
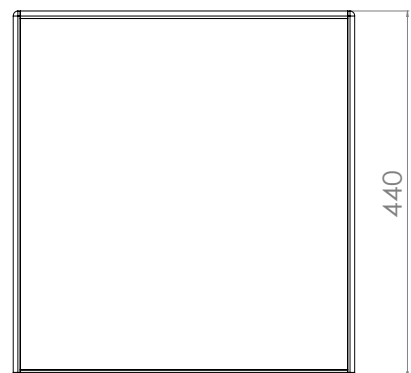
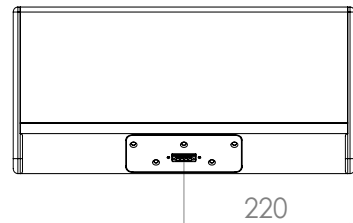
Physical

Dimensions	440 x 440 x 200 mm (38.7 liters)
Weight	11.0 kg
Colour	White (RAL9016), Black (RAL9005), matt finish
Connection	Eurobloc with output « chain », plug supplied

Accessories

SB110_KMV	Kit for vertical mounting on wall
-----------	-----------------------------------

Dimensions (mm)



1 : Continuous power with pink noise, and recommended EQ.

2 : With continuous pink noise, crossover at 180Hz and recommended EQ.