

Passive column loudspeaker **Ray-On 100**

Ray-On

Ray-On 100 - Datasheet
Passive column loudspeaker



Ray-On 100 is a 1m high passive column loudspeaker that could be mounted vertically. Its acoustical performances are very close to DSP loudspeakers ones thanks to the DGRC principle. With a nominal range of 20m, it offers a high quality sound for medium spaces such as conference rooms, airports, train stations, churches, shopping malls, amusement parks, etc.

Like every column of the Ray-On range, R100TC can be switched between a low impedance mode and a 70/100V mode, and be used indoor and outdoor.

It is available in a EN54-24 certified version under the reference R100TC.

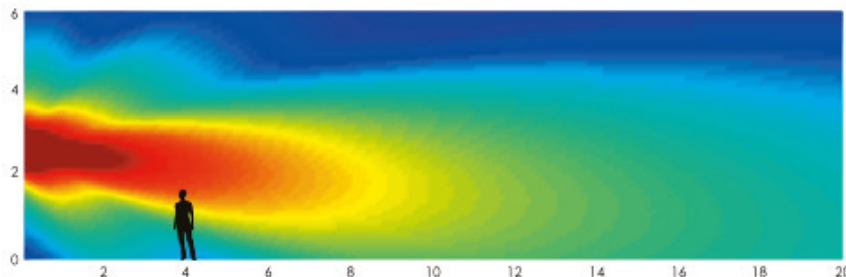


- Listening comfort
- Certified EN54-24
- Vertical mounting
- Perfect intelligibility

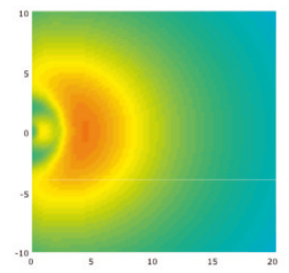
EN54-24
TYPE B



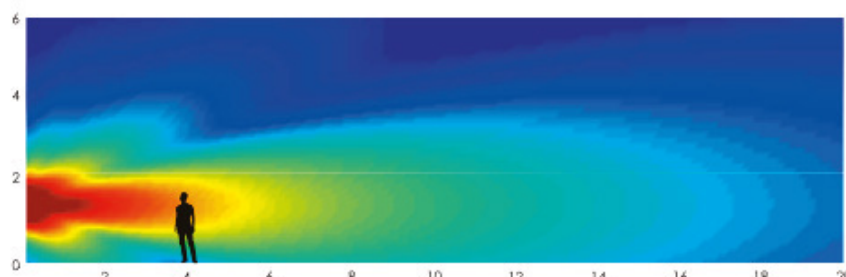
Acoustical data



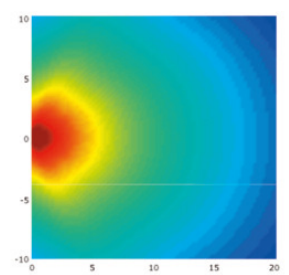
Sound coverage **Ray-On100**, DGRC column



horizontal view



Sound coverage, standard 1m column



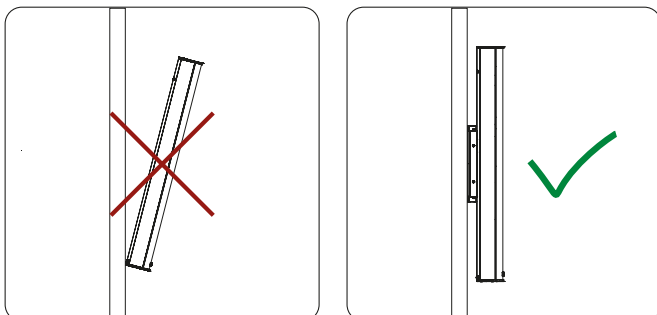
horizontal view

Passive column loudspeaker **Ray-On 100**

Ray-On

Mounting

Vertical mounting



The rigging system allows the column to stick very close to the wall, giving the impression that the column is part of the structure.

Acoustical data	Low impedance	100V
Continuous power (according EN54-24)	150W	25W / 50W / 100W
SPL max continuous at 8m	92dB	84 / 87 / 90 dB
Amplifier power recommended	300W	-
Sensitivity at 8m	72dB / W at 8m	
Frequency response at -3dB / -10dB	150Hz - 16,5kHz / 120Hz - 18kHz	
Vertical directivity	Wavefront synthesis	
Nominal range at ± 3 dB and ± 5 dB	15m / 20m	
Horizontal opening angle 1kHz / 4kHz	$\pm 100^\circ$ / $\pm 70^\circ$	
Loudspeakers	12 loudspeakers 70x70mm outdoor	

Electrical data	Low impedance	100V
Nominal impedance	8 Ohms	400 / 200 / 100 Ohms
Loudspeaker connectors	Ceramic terminal block screw, with «loop-through»	
Wire section	From 0,5 to 2,5 mm ²	
Protection	Thermal fuse and protection against overload	

Mechanical data	Low impedance	100V
Net / shipping weight (kg)	8,3 / 9,1	
Dimensions (mm)	128 (W) x 117 (D) x 1026 (H)	
Materials	Aluminum, treated steel grid rustproof and UVproof	
Colors	Black (RAL9005) ; White (RAL9016 repaintable)	
Mounting	Flush and mast mounting	

Tuning and exploitation	Low impedance	100V
Recommended equalization	Speech : 4 param. cells / Music : 6 param. cells	
Modeling	EASE and CATT-Acoustic models available	
Nominal mounting height seating / standing audience (cm)	190 / 230	
Environment	Indoor, outdoor - IP54, from -25°C to 55°C	

Ray-On 100 - Datasheet
Passive column loudspeaker

Active
audio
L'acoustique active

www.activeaudio.fr
info@activeaudio.fr

Tel +33 (0)2 40 46 66 64