

StepArray column loudspeaker SA180P



StepArray column loudspeakers ensure perfect speech intelligibility and optimal acoustic comfort, even in noisy and reverberant venues. They are based on the DGRC (Digital and Geometric Radiation Control) principle.

SA180P is a 1,80m high column loudspeaker, with a 40m range perfectly adapted for places of worship, large halls, etc.

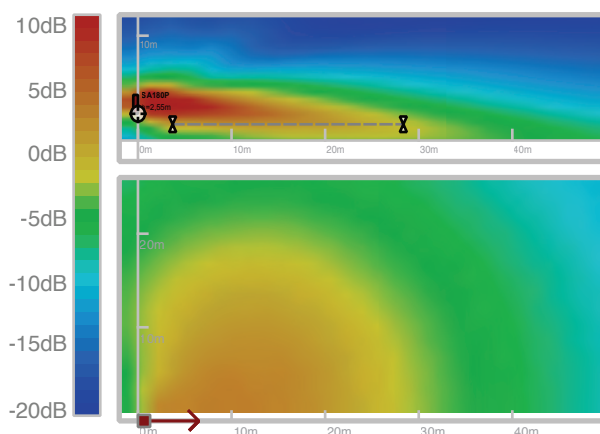
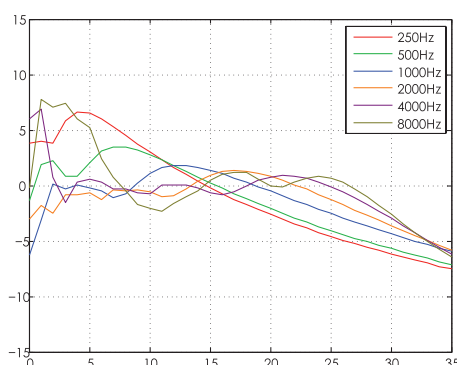
DSP processing of StepArray columns is performed in the NUT processor.

The NUT control software can be downloaded for free.



- Security
- Optimal intelligibility
- Even sound coverage
- Easy maintenance

Sound coverage



Above: Abscissa: distance (m) ; Column SA180P at 2,55m from ground
0dB is the mean SPL over 6m-25m on axis

Acoustical data

Angle of listening area	0-5°
Range +/- 3dB	30m
Range +/- 5dB	40m
Max SPL (CEI268-16 noise)	95dB SPL at 15m
Freq. bandwidth (-10dB)	110Hz-19kHz
Horiz. opening angle	180°
Loudspeaker	3", neodymium, moulded frame

Electrical data

Connector	12 pins
Cabling length	≤300m with 4G1,5 cable ≤500m with 4G2,5 cable
Impedance	3 channels, 8 Ohms

Mechanical data

Materials	Steel and PVC
Dimensions (mm)	1840(H) x 124(W) x 135(D)
Weight (kg)	17
Environment	From -25°C to 55°C. IP55
Color	Black (RAL9005) ; White (RAL9016) other RALs in option

Mounting

Flush mounting	Supplied square brackets
----------------	--------------------------

Tuning and exploitation

Software	Supplied NUT software
Modeling	EASE et CATT-Acoustic models available